

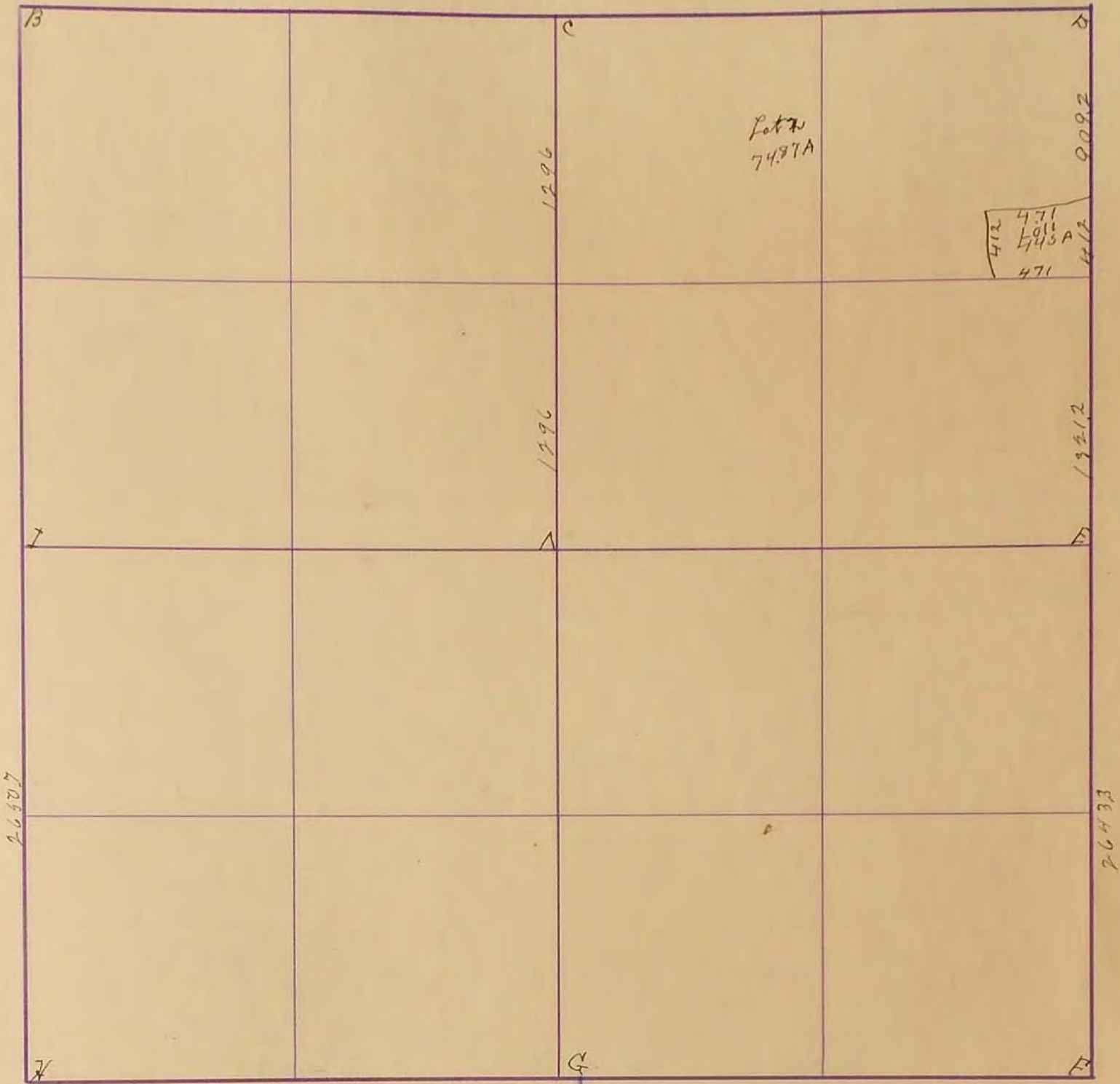
MURRAY COUNTY.

Section 1 92

Township 106

Range 43

10798 McGill-Warner Co., Blank Book Manufacturers, St. Paul.



Apr. 20 1925

B. gov. cor + stone

C. Ripstone granite rock in old corner

D. June 1978

E. Grey stone (located) Located Conc. Monument 9" Below Roadtop
 June 1978 { E.P. 48.0. in Elm Tree NW 42.95'
 R.P. 48.0. in Cor. Post NE 46.11'

F. stone Located Conc. Monument 9" below Roadtop

G. F. Cor. NW 42.9' : F. Cor. SW 43.9' : F. Cor. SE 41.8' : F. Cor. NE 34.1'

H. stone. see Ref. on Township plat Book

I. stone on line with iron post 25' east. See 19

J. W. Hooliter craft

"D" "Stone": R. P. Tack in Light pole S.W. 65.0' : R. P. 2 spires in

Blazed Willow Tree N.W. 46.5' F. R. March 1934

18
19
20
21
22
23
24
25
26
27
28
29
30
31
32
33
34
35
36

SURVEY No. _____

Section 19 Town 106 Range 43



FIELD NOTES.

Apr. 20 1925

- B Gov. Cor & stone
 - C Pipestone granite rock in old corner.
 - D " " " "
 - E Grey stone "located"
 - F Grey stone
 - G
 - H Stone see Ref. on Top plot book
 - I Stone on line with iron post on Sec. 19
- J. W. Woodliff*

"D" Found stone Placed stone on Top: R.P. Tack in Light pole S.W. 65°
 R.P. 2 spikes in Blazed Willow Tree N.W. 46 1/2' 1934 F.A. Mordt.